

FXL12 Rabbit Polyclonal Antibody

Description

Product type	Primary Antibody
Code	BT-AP02754
Host	Rabbit
Isotype	IgG
Size	100ul, 50ul, 20ul
Immunogen	Synthesized peptide derived from human FXL12
Mol wt	35860
Species reactivity	Human, Mouse
Clonality	Polyclonal
Recommended application	WB
Concentration	1 mg/ml
Full name	FXL12
Synonyms	FXL12

This product is for research use only, not for use in human, therapeutic or diagnostic procedure.

Background

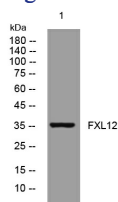
Members of the F-box protein family| such as FBXL12| are characterized by an approximately 40-amino acid F-box motif. SCF complexes| formed by SKP1 (MIM 601434)| cullin (see CUL1; MIM 603134)| and F-box proteins| act as protein-ubiquitin ligases. F-box proteins interact with SKP1 through the F box| and they interact with ubiquitination targets through other protein interaction domains (Jin et al.| 2004

Recommended Dilution

WB: 1: 500 - 1: 2000

Not yet tested in other applications.

Images



Western blot analysis of lysates from Jarkat cells, primary antibody was diluted at 1:1000, 4°C overnight

Storage

-20°C for 1 year

501 Changsheng S Rd, Nanhu Dist, Jiaxing, Zhejiang, China

Tel: 86 21 31007137 | E-mail: save@bt-laboratory.com | www.bt-laboratory.com