

FXL18 Rabbit Polyclonal Antibody

Description

Product type	Primary Antibody
Code	BT-AP02756
Host	Rabbit
Isotype	IgG
Size	100ul, 50ul, 20ul
Immunogen	Synthesized peptide derived from human FXL18
Mol wt	88550
Species reactivity	Human, Rat, Mouse
Clonality	Polyclonal
Recommended application	WB
Concentration	1 mg/ml
Full name	FXL18
Synonyms	FXL18

This product is for research use only, not for use in human, therapeutic or diagnostic procedure.

Background

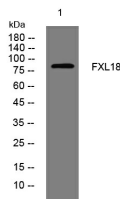
The protein encoded by this gene is a member of a family of proteins that contain an approximately 40-amino acid F-box motif. This motif is important for interaction with SKP1 and for targeting some proteins for degradation. The encoded protein has been shown to control the cellular level of FBXL7| a protein that induces mitotic arrest| by targeting it for polyubiquitylation and proteasomal degradation. Members of the F-box protein family| such as FBXL18| are characterized by an approximately 40-amino acid F-box motif. F-box proteins interact with SKP1 through the F box| and they interact with ubiquitination targets through other protein interaction domains.

Recommended Dilution

WB: 1: 500 - 1: 2000

Not yet tested in other applications.

Images



Western blot analysis of lysates from HpeG2 cells, primary antibody was diluted at 1:1000, 4°C overnight

Storage

-20°C for 1 year