

Dvl-2 Polyclonal Antibody

Description

Product type	Primary Antibody
Code	BT-AP02758
Host	Rabbit
Isotype	IgG
Size	20ul, 50ul, 100ul
Immunogen	Synthesized peptide derived from Dvl-2 . at AA range: 670-750
Mol wt	78948
Species reactivity	Human, Mouse
Clonality	Polyclonal
Recommended application	WB, IHC-p, ELISA
Concentration	1 mg/ml
Full name	Dvl-2 Antibody
Synonyms	DVL2; Segment polarity protein dishevelled homolog DVL-2; Dishevelled-2; DSH homolog 2

This product is for research use only, not for use in human, therapeutic or diagnostic procedure.

Background

DVL2 encodes a member of the dishevelled (dsh) protein family. The vertebrate dsh proteins have approximately 40% amino acid sequence similarity with Drosophila dsh. DVL2 encodes a 90-kD protein that undergoes posttranslational phosphorylation to form a 95-kD cytoplasmic protein, which may play a role in the signal transduction pathway mediated by multiple Wnt proteins. The mechanisms of dishevelled function in Wnt signaling are likely to be conserved among metazoans.

Recommended Dilution

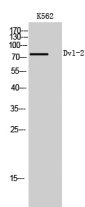
WB: 1: 500 - 1: 2000

IHC: 1: 100 - 1: 300

ELISA: 1: 40000

Not yet tested in other applications.

Images



Western Blot analysis of K562 cells using Dvl-2 Polyclonal Antibody

Storage

-20°C for one year