

## Dvl-3 Polyclonal Antibody

### Description

<b>Product type</b>	Primary Antibody
<b>Code</b>	BT-AP02759
<b>Host</b>	Rabbit
<b>Isotype</b>	IgG
<b>Size</b>	20ul, 50ul, 100ul
<b>Immunogen</b>	The antiserum was produced against synthesized peptide derived from human DVL3. AA range:326-375
<b>Mol wt</b>	78055
<b>Species reactivity</b>	Human, Mouse
<b>Clonality</b>	Polyclonal
<b>Recommended application</b>	WB, IHC-p, ELISA
<b>Concentration</b>	1 mg/ml
<b>Full name</b>	Dvl-3 Antibody
<b>Synonyms</b>	DVL3; KIAA0208; Segment polarity protein dishevelled homolog DVL-3; Dishevelled-3; DSH homolog 3

**This product is for research use only, not for use in human, therapeutic or diagnostic procedure.**

### Background

DVL3 is a member of a multi-gene family which shares strong similarity with the Drosophila dishevelled gene, dsh. The Drosophila dishevelled gene encodes a cytoplasmic phosphoprotein that regulates cell proliferation.

### Recommended Dilution

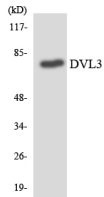
WB: 1: 500 - 1: 2000

IHC: 1: 100 - 1: 300

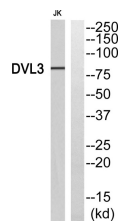
ELISA: 1: 20000

Not yet tested in other applications.

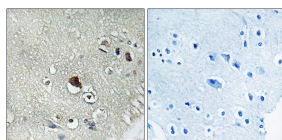
### Images



Western blot analysis of the lysates from Jurkat cells using DVL3 antibody.



Western blot analysis of DVL3 Antibody. The lane on the right is blocked with the DVL3 peptide.



Immunohistochemistry analysis of paraffin-embedded human brain tissue, using DVL3 Antibody. The picture on the right is blocked with the synthesized peptide.

### Storage

-20°C for one year

501 Changsheng S Rd, Nanhu Dist, Jiaxing, Zhejiang, China

Tel: 86 21 31007137 | E-mail: [save@bt-laboratory.com](mailto:save@bt-laboratory.com) | [www.bt-laboratory.com](http://www.bt-laboratory.com)