

G6PC2 Rabbit Polyclonal Antibody

Description

Product type	Primary Antibody
Code	BT-AP02763
Host	Rabbit
Isotype	IgG
Size	100ul, 50ul, 20ul
Immunogen	Synthesized peptide derived from human G6PC2
Mol wt	N/A
Species reactivity	Human, Mouse
Clonality	Polyclonal
Recommended application	WB
Concentration	1 mg/ml
Full name	G6PC2
Synonyms	G6PC2; Glucose-6-phosphatase 2; G-6-Pase 2; G6Pase 2; EC 3.1.3.9; Islet-specific glucose-6-phosphatase catalytic subunit-related protein

This product is for research use only, not for use in human, therapeutic or diagnostic procedure.

Background

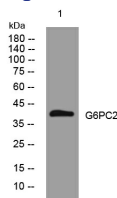
This gene encodes an enzyme belonging to the glucose-6-phosphatase catalytic subunit family. These enzymes are part of a multicomponent integral membrane system that catalyzes the hydrolysis of glucose-6-phosphate| the terminal step in gluconeogenic and glycogenolytic pathways| allowing the release of glucose into the bloodstream. The family member encoded by this gene is found in pancreatic islets and does not exhibit phosphohydrolase activity| but it is a major target of cell-mediated autoimmunity in diabetes. Several alternatively spliced transcript variants of this gene have been described| but their biological validity has not been determined.

Recommended Dilution

WB: 1: 500 - 1: 2000

Not yet tested in other applications.

Images



Western blot analysis of lysates from HeLa cells, primary antibody was diluted at 1:1000, 4°C overnight

Storage

-20°C for 1 year