

## Dynein IC1 Polyclonal Antibody

### Description

<b>Product type</b>	Primary Antibody
<b>Code</b>	BT-AP02767
<b>Host</b>	Rabbit
<b>Isotype</b>	IgG
<b>Size</b>	20ul, 50ul, 100ul
<b>Immunogen</b>	The antiserum was produced against synthesized peptide derived from human DNAI1. AA range:211-260
<b>Mol wt</b>	79283
<b>Species reactivity</b>	Human, Mouse, Rat
<b>Clonality</b>	Polyclonal
<b>Recommended application</b>	WB, ELISA
<b>Concentration</b>	1 mg/ml
<b>Full name</b>	Dynein IC1 Antibody
<b>Synonyms</b>	DNAI1; Dynein intermediate chain 1; axonemal; Axonemal dynein intermediate chain 1

This product is for research use only, not for use in human, therapeutic or diagnostic procedure.

### Background

DNAI1 encodes a member of the dynein intermediate chain family. The dynein axonemal intermediate chain 1 is part of the dynein complex in respiratory cilia. The inner- and outer-arm dyneins, which bridge between the doublet microtubules in axonemes, are the force-generating proteins responsible for the sliding movement in axonemes. The intermediate and light chains, thought to form the base of the dynein arm, help mediate attachment and may also participate in regulating dynein activity. Mutations in this gene result in abnormal ciliary ultrastructure and function associated with primary ciliary dyskinesia and Kartagener syndrome. Alternative splicing results in multiple transcript variants.

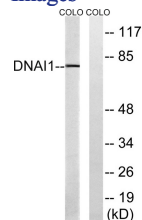
### Recommended Dilution

WB: 1: 500 - 1: 2000

ELISA: 1: 20000

Not yet tested in other applications.

### Images



Western blot analysis of lysates from COLO cells, using DNAI1 Antibody. The lane on the right is blocked with the synthesized peptide.

### Storage

-20°C for one year