

## Dynein IC2 Polyclonal Antibody

### Description

<b>Product type</b>	Primary Antibody
<b>Code</b>	BT-AP02768
<b>Host</b>	Rabbit
<b>Isotype</b>	IgG
<b>Size</b>	20ul, 50ul, 100ul
<b>Immunogen</b>	The antiserum was produced against synthesized peptide derived from human DNAI2. AA range:71-120
<b>Mol wt</b>	68851
<b>Species reactivity</b>	Human, Mouse, Rat
<b>Clonality</b>	Polyclonal
<b>Recommended application</b>	WB, ELISA
<b>Concentration</b>	1 mg/ml
<b>Full name</b>	Dynein IC2 Antibody
<b>Synonyms</b>	DNAI2; Dynein intermediate chain 2; axonemal; Axonemal dynein intermediate chain 2

This product is for research use only, not for use in human, therapeutic or diagnostic procedure.

### Background

The protein encoded by DNAI2 (dynein axonemal intermediate chain 2) belongs to the dynein intermediate chain family, and is part of the dynein complex of respiratory cilia and sperm flagella. Mutations in DNAI2 are associated with primary ciliary dyskinesia type 9. Alternatively spliced transcript variants encoding different isoforms have been noted for DNAI2.

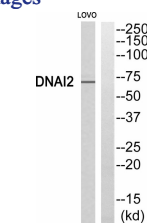
### Recommended Dilution

WB: 1: 500 - 1: 2000

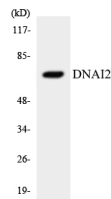
ELISA: 1: 10000

Not yet tested in other applications.

### Images



Western blot analysis of DNAI2 Antibody. The lane on the right is blocked with the DNAI2 peptide.



Western blot analysis of the lysates from RAW264.7 cells using DNAI2 antibody.

### Storage

-20°C for one year

