

Dynein LC 2B Polyclonal Antibody

Description

| | |
|--------------------------------|---|
| Product type | Primary Antibody |
| Code | BT-AP02771 |
| Host | Rabbit |
| Isotype | IgG |
| Size | 20ul, 50ul, 100ul |
| Immunogen | The antiserum was produced against synthesized peptide derived from human DYNLRB2. AA range:21-70 |
| Mol wt | 10855 |
| Species reactivity | Human, Mouse |
| Clonality | Polyclonal |
| Recommended application | IHC-p, ELISA |
| Concentration | 1 mg/ml |
| Full name | Dynein LC 2B Antibody |
| Synonyms | DYNLRB2; DNCL2B; DNLC2B; ROBLD2; Dynein light chain roadblock-type 2; Dynein light chain 2B; cytoplasmic; Roadblock domain-containing protein 2 |

This product is for research use only, not for use in human, therapeutic or diagnostic procedure.

Background

DYNLRB2 (Dynein Light Chain Roadblock-Type 2) is a Protein Coding gene. Among its related pathways are Organelle biogenesis and maintenance and Intraflagellar transport. GO annotations related to this gene include microtubule motor activity. An important paralog of this gene is DYNLRB1.

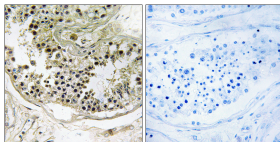
Recommended Dilution

IHC: 1: 100 - 1: 300

ELISA: 1: 10000

Not yet tested in other applications.

Images



Immunohistochemistry analysis of paraffin-embedded human testis tissue, using DYNLRB2 Antibody. The picture on the right is blocked with the synthesized peptide.

Storage

-20°C for one year

501 Changsheng S Rd, Nanhu Dist, Jiaxing, Zhejiang, China

Tel: 86 21 31007137 | E-mail: save@bt-laboratory.com | www.bt-laboratory.com