

GALT2 Rabbit Polyclonal Antibody

Description

Product type	Primary Antibody
Code	BT-AP02777
Host	Rabbit
Isotype	IgG
Size	100ul, 50ul, 20ul
Immunogen	Synthesized peptide derived from human GALT2
Mol wt	N/A
Species reactivity	Human, Mouse
Clonality	Polyclonal
Recommended application	WB
Concentration	1 mg/ml
Full name	GALT2
Synonyms	GALT2; Polypeptide N-acetylgalactosaminyltransferase 2; EC 2.4.1.41; Polypeptide GalNAc transferase 2; GalNAc-T2; pp-GaNTase 2; Protein-UDP acetylgalactosaminyltransferase 2; UDP-GalNAc:polypeptide N-acetylgalactosaminyltransferase 2; Polypeptide N-acetylgalactosaminyltransferase 2 soluble form;

This product is for research use only, not for use in human, therapeutic or diagnostic procedure.

Background

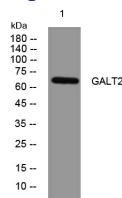
This gene encodes a member of the glycosyltransferase 2 protein family. Members of this family initiate mucin-type O-glycosylation of peptides in the Golgi apparatus. The encoded protein may be involved in O-linked glycosylation of the immunoglobulin A1 hinge region. This gene may influence triglyceride levels and may be involved Type 2 diabetes as well as several types of cancer. Alternative splicing results in multiple transcript variants.

Recommended Dilution

WB: 1: 500 - 1: 2000

Not yet tested in other applications.

Images



Western blot analysis of lysates from MCF-7 cells, primary antibody was diluted at 1:1000, 4°C overnight

Storage

-20°C for 1 year