

## Dysferlin Polyclonal Antibody

### Description

<b>Product type</b>	Primary Antibody
<b>Code</b>	BT-AP02780
<b>Host</b>	Rabbit
<b>Isotype</b>	IgG
<b>Size</b>	20ul, 50ul, 100ul
<b>Immunogen</b>	The antiserum was produced against synthesized peptide derived from human Dysferlin. AA range:1981-2030
<b>Mol wt</b>	237295
<b>Species reactivity</b>	Human, Mouse
<b>Clonality</b>	Polyclonal
<b>Recommended application</b>	WB, IF, ELISA
<b>Concentration</b>	1 mg/ml
<b>Full name</b>	Dysferlin Antibody
<b>Synonyms</b>	DYSF; FER1L1; Dysferlin; Dystrophy-associated fer-1-like protein; Fer-1-like protein 1

**This product is for research use only, not for use in human, therapeutic or diagnostic procedure.**

### Background

The protein encoded by *DYSF* (dysferlin) belongs to the ferlin family and is a skeletal muscle protein found associated with the sarcolemma. It is involved in muscle contraction and contains C2 domains that play a role in calcium-mediated membrane fusion events, suggesting that it may be involved in membrane regeneration and repair. In addition, the protein encoded by *DYSF* binds caveolin-3, a skeletal muscle membrane protein which is important in the formation of caveolae. Specific mutations in *DYSF* have been shown to cause autosomal recessive limb girdle muscular dystrophy type 2B (LGMD2B) as well as Miyoshi myopathy. Alternative splicing results in multiple transcript variants.

### Recommended Dilution

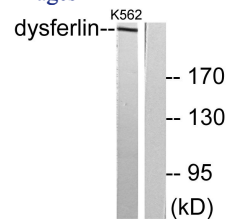
WB: 1: 500 - 1: 2000

IF: 1: 200 - 1: 1000

ELISA: 1: 10000

Not yet tested in other applications.

### Images



Western blot analysis of lysates from K562 cells, using Dysferlin Antibody. The lane on the right is blocked with the synthesized peptide.

### Storage

-20°C for one year