

## DZIP3 Polyclonal Antibody

### Description

<b>Product type</b>	Primary Antibody
<b>Code</b>	BT-AP02782
<b>Host</b>	Rabbit
<b>Isotype</b>	IgG
<b>Size</b>	20ul, 50ul, 100ul
<b>Immunogen</b>	The antiserum was produced against synthesized peptide derived from human DZIP3. AA range:681-730
<b>Mol wt</b>	138604
<b>Species reactivity</b>	Human
<b>Clonality</b>	Polyclonal
<b>Recommended application</b>	WB, IHC-p, ELISA
<b>Concentration</b>	1 mg/ml
<b>Full name</b>	DZIP3 Antibody
<b>Synonyms</b>	DZIP3; KIAA0675; E3 ubiquitin-protein ligase DZIP3; DAZ-interacting protein 3; RNA-binding ubiquitin ligase of 138 kDa; hRUL138

This product is for research use only, not for use in human, therapeutic or diagnostic procedure.

### Background

DZIP3 (DAZ Interacting Zinc Finger Protein 3) is a Protein Coding gene. Among its related pathways are Immune System and Antigen processing- Ubiquitination and Proteasome degradation. GO annotations related to this gene include poly (A) RNA binding and ligase activity. An important paralog of this gene is RNF214.

### Recommended Dilution

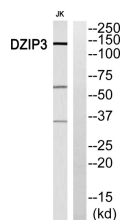
WB: 1: 500 - 1: 2000

IHC: 1: 100 - 1: 300

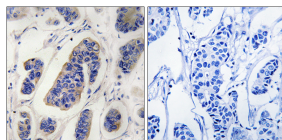
ELISA: 1: 40000

Not yet tested in other applications.

### Images



Western blot analysis of DZIP3 Antibody. The lane on the right is blocked with the DZIP3 peptide.



Immunohistochemistry analysis of paraffin-embedded human breast carcinoma, using DZIP3 Antibody. The lane on the right is blocked with the DZIP3 peptide.

### Storage

-20°C for one year

501 Changsheng S Rd, Nanhu Dist, Jiaxing, Zhejiang, China

Tel: 86 21 31007137 | E-mail: [save@bt-laboratory.com](mailto:save@bt-laboratory.com) | [www.bt-laboratory.com](http://www.bt-laboratory.com)