

EAAT3 Polyclonal Antibody

Description

Product type	Primary Antibody
Code	BT-AP02802
Host	Rabbit
Isotype	IgG
Size	20ul, 50ul, 100ul
Immunogen	The antiserum was produced against synthesized peptide derived from human EAAT3. AA range:122-171
Mol wt	57100
Species reactivity	Human, Mouse, Rat
Clonality	Polyclonal
Recommended application	WB, ELISA
Concentration	1 mg/ml
Full name	EAAT3 Antibody
Synonyms	SLC1A1; EAAC1; EAAT3; Excitatory amino acid transporter 3; Excitatory amino-acid carrier 1; Neuronal and epithelial glutamate transporter; Sodium-dependent glutamate/aspartate transporter 3; Solute ca

This product is for research use only, not for use in human, therapeutic or diagnostic procedure.

Background

SLC1A1 encodes a member of the high-affinity glutamate transporters that play an essential role in transporting glutamate across plasma membranes. In brain, these transporters are crucial in terminating the postsynaptic action of the neurotransmitter glutamate, and in maintaining extracellular glutamate concentrations below neurotoxic levels. This transporter also transports aspartate, and mutations in SLC1A1 are thought to cause dicarboxylic amino aciduria, also known as glutamate-aspartate transport defect.

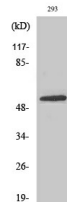
Recommended Dilution

WB: 1: 500 - 1: 2000

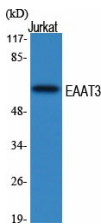
ELISA: 1: 10000

Not yet tested in other applications.

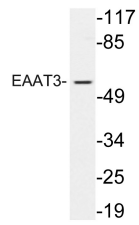
Images



Western Blot analysis of 293 cells using EAAT3 Polyclonal Antibody



Western Blot analysis of various cells using EAAT3 Polyclonal Antibody



Western blot analysis of lysate from 293 cells treated with EGF, using EAAT3 antibody.

Storage

-20°C for one year

501 Changsheng S Rd, Nanhu Dist, Jiaxing, Zhejiang, China

Tel: 86 21 31007137 | E-mail: save@bt-laboratory.com | www.bt-laboratory.com