

## EAR2 Polyclonal Antibody

### Description

<b>Product type</b>	Primary Antibody
<b>Code</b>	BT-AP02803
<b>Host</b>	Rabbit
<b>Isotype</b>	IgG
<b>Size</b>	20ul, 50ul, 100ul
<b>Immunogen</b>	The antiserum was produced against synthesized peptide derived from human NR2F6. AA range:11-60
<b>Mol wt</b>	42979
<b>Species reactivity</b>	Human, Mouse, Rat
<b>Clonality</b>	Polyclonal
<b>Recommended application</b>	WB, IHC-p, IF, ELISA
<b>Concentration</b>	1 mg/ml
<b>Full name</b>	EAR2 Antibody
<b>Synonyms</b>	NR2F6; EAR2; ERBAL2; Nuclear receptor subfamily 2 group F member 6; V-erbA-related protein 2; EAR-2

This product is for research use only, not for use in human, therapeutic or diagnostic procedure.

### Background

NR2F6, also known as Nuclear receptor subfamily 2 group F member 6, is a nuclear protein belonging to the nuclear hormone receptor family and NR2 subfamily with a nuclear receptor DNA-binding domain. NR2F6 is a nuclear receptor involved in action regulation of the transcription of the GNRH1 gene. It binds to the TGACCT repeat motif enhancing the renin gene and thus acting as a negative modulator of renin gene transcription. NR2F6 is required early in the development of the locus ceruleus (LC), thus in some way contributing to the regulation of the forebrain clock, at least in part, through targeted release of noradrenalin into the cortical area.

### Recommended Dilution

WB: 1: 500 - 1: 2000

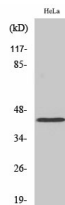
IHC: 1: 100 - 1: 300

IF: 1: 200 - 1: 1000

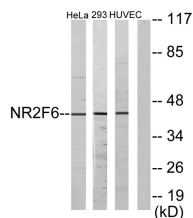
ELISA: 1: 20000

Not yet tested in other applications.

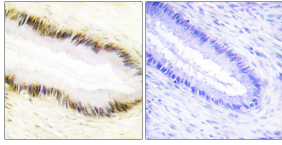
### Images



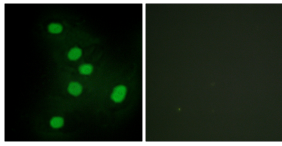
Western Blot analysis of various cells using EAR2 Polyclonal Antibody cells nucleus.



Western blot analysis of lysates from HeLa, HUVEC, and 293 cells, using NR2F6 Antibody. The lane on the right is blocked with the synthesized peptide.



Immunohistochemistry analysis of paraffin-embedded human cervix carcinoma tissue, using NR2F6 Antibody. The picture on the right is blocked with the synthesized peptide.



Immunofluorescence analysis of HepG2 cells, using NR2F6 Antibody. The picture on the right is blocked with the synthesized peptide.

### Storage

-20°C for one year

501 Changsheng S Rd, Nanhu Dist, Jiaxing, Zhejiang, China

Tel: 86 21 31007137 | E-mail: [save@bt-laboratory.com](mailto:save@bt-laboratory.com) | [www.bt-laboratory.com](http://www.bt-laboratory.com)