

## Ebi3 Polyclonal Antibody

### Description

<b>Product type</b>	Primary Antibody
<b>Code</b>	BT-AP02805
<b>Host</b>	Rabbit
<b>Isotype</b>	IgG
<b>Size</b>	20ul, 50ul, 100ul
<b>Immunogen</b>	The antiserum was produced against synthesized peptide derived from the Internal region of human EBI3. AA range:101-150
<b>Mol wt</b>	25396
<b>Species reactivity</b>	Human, Mouse
<b>Clonality</b>	Polyclonal
<b>Recommended application</b>	WB, ELISA
<b>Concentration</b>	1 mg/ml
<b>Full name</b>	Ebi3 Antibody
<b>Synonyms</b>	EBI3; IL27B; Interleukin-27 subunit beta; IL-27 subunit beta; IL-27B; Epstein-Barr virus-induced gene 3 protein; EBV-induced gene 3 protein

**This product is for research use only, not for use in human, therapeutic or diagnostic procedure.**

### Background

EBI3 was identified by its induced expression in B lymphocytes in response Epstein-Barr virus infection. It encodes a secreted glycoprotein belonging to the hematopoietin receptor family, and heterodimerizes with a 28 kDa protein to form interleukin 27 (IL-27). IL-27 regulates T cell and inflammatory responses, in part by activating the Jak/STAT pathway of CD4+ T cells.

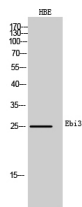
### Recommended Dilution

WB: 1: 500 - 1: 2000

ELISA: 1: 10000

Not yet tested in other applications.

### Images



Western Blot analysis of HBE cells using Ebi3 Polyclonal Antibody. Secondary antibody was diluted at 1:20000

### Storage

-20°C for one year