

ECP Polyclonal Antibody

Description

| | |
|-------------------------|---|
| Product type | Primary Antibody |
| Code | BT-AP02816 |
| Host | Rabbit |
| Isotype | IgG |
| Size | 20ul, 50ul, 100ul |
| Immunogen | The antiserum was produced against synthesized peptide derived from human ECP. AA range:102-151 |
| Mol wt | 18385 |
| Species reactivity | Human |
| Clonality | Polyclonal |
| Recommended application | WB, ELISA |
| Concentration | 1 mg/ml |
| Full name | ECP Antibody |
| Synonyms | RNASE3; ECP; RNS3; Eosinophil cationic protein; ECP; Ribonuclease 3; RNase 3 |

This product is for research use only, not for use in human, therapeutic or diagnostic procedure.

Background

Ribonuclease A family member 3 encoded by RNASE3 belongs to the pancreatic ribonuclease family, a subset of the ribonuclease A superfamily. The protein exhibits antimicrobial activity against pathogenic bacteria.

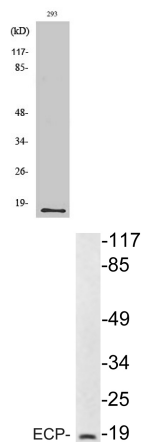
Recommended Dilution

WB: 1: 500 - 1: 2000

ELISA: 1: 10000

Not yet tested in other applications.

Images



Western Blot analysis of various cells using ECP Polyclonal Antibody

Western blot analysis of lysate from 293 cells, using ECP antibody.

Storage

-20°C for one year