

ECRG4 Polyclonal Antibody

Description

Product type	Primary Antibody
Code	BT-AP02817
Host	Rabbit
Isotype	IgG
Size	20ul, 50ul, 100ul
Immunogen	The antiserum was produced against synthesized peptide derived from human ECRG4. AA range:41-90
Mol wt	17183
Species reactivity	Human, Mouse
Clonality	Polyclonal
Recommended application	IHC-p, IF, ELISA
Concentration	1 mg/ml
Full name	ECRG4 Antibody
Synonyms	C2orf40; ECRG4; Augurin; Esophageal cancer-related gene 4 protein

This product is for research use only, not for use in human, therapeutic or diagnostic procedure.

Background

C2orf40 (Chromosome 2 Open Reading Frame 40) is a Protein Coding gene. Diseases associated with C2orf40 include esophageal cancer.

Recommended Dilution

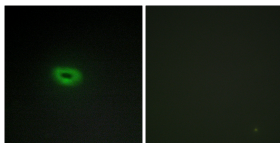
IHC: 1: 100 - 1: 300

IF: 1: 200 - 1: 1000

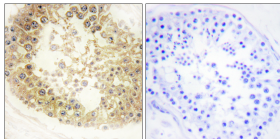
ELISA: 1: 20000

Not yet tested in other applications.

Images



Immunofluorescence analysis of A549 cells, using ECRG4 Antibody. The picture on the right is blocked with the synthesized peptide.



Immunohistochemistry analysis of paraffin-embedded human testis tissue, using ECRG4 Antibody. The picture on the right is blocked with the synthesized peptide.

Storage

-20°C for one year