

GGEE1 Rabbit Polyclonal Antibody

Description

Product type	Primary Antibody
Code	BT-AP02821
Host	Rabbit
Isotype	IgG
Size	100ul, 50ul, 20ul
Immunogen	Synthesized peptide derived from human GGEE1
Mol wt	14300
Species reactivity	Human, Rat, Mouse
Clonality	Polyclonal
Recommended application	WB
Concentration	1 mg/ml
Full name	GGEE1
Synonyms	GGEE1

This product is for research use only, not for use in human, therapeutic or diagnostic procedure.

Background

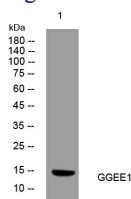
This gene is a member of family of proteins that are expressed in a variety of tumors and in some fetal and reproductive tissues. The encoded protein may protect cells from programmed cell death. Multiple alternatively spliced transcript variants encoding distinct isoforms have been found.

Recommended Dilution

WB: 1: 500 - 1: 2000

Not yet tested in other applications.

Images



Western blot analysis of lysates from HpeG2 cells, primary antibody was diluted at 1:1000, 4°C overnight

Storage

-20°C for 1 year

501 Changsheng S Rd, Nanhu Dist, Jiaxing, Zhejiang, China

Tel: 86 21 31007137 | E-mail: save@bt-laboratory.com | www.bt-laboratory.com