

EDG-3 Polyclonal Antibody

Description

Product type	Primary Antibody
Code	BT-AP02827
Host	Rabbit
Isotype	IgG
Size	20ul, 50ul, 100ul
Immunogen	The antiserum was produced against synthesized peptide derived from human EDG3. AA range:115-164
Mol wt	42250
Species reactivity	Human, Mouse, Rat
Clonality	Polyclonal
Recommended application	WB, IF, ELISA
Concentration	1 mg/ml
Full name	EDG-3 Antibody
Synonyms	S1PR3; EDG3; Sphingosine 1-phosphate receptor 3; S1P receptor 3; S1P3; Endothelial differentiation G-protein coupled receptor 3; Sphingosine 1-phosphate receptor Edg-3; S1P receptor Edg-3

This product is for research use only, not for use in human, therapeutic or diagnostic procedure.

Background

S1PR3 encodes a member of the EDG family of receptors, which are G protein-coupled receptors. This protein has been identified as a functional receptor for sphingosine 1-phosphate and likely contributes to the regulation of angiogenesis and vascular endothelial cell function.

Recommended Dilution

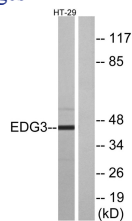
WB: 1: 500 - 1: 2000

IF: 1: 200 - 1: 1000

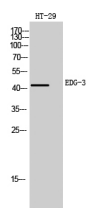
ELISA: 1: 40000

Not yet tested in other applications.

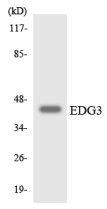
Images



Western blot analysis of lysates from HT-29 cells, using EDG3 Antibody. The lane on the right is blocked with the synthesized peptide.



Western Blot analysis of HT-29 cells using EDG-3 Polyclonal Antibody



Western blot analysis of the lysates from HepG2 cells using EDG3 antibody.

Storage

-20°C for one year

501 Changsheng S Rd, Nanhu Dist, Jiaxing, Zhejiang, China

Tel: 86 21 31007137 | E-mail: save@bt-laboratory.com | www.bt-laboratory.com