

EDG-3 Polyclonal Antibody

Description

Product type	Primary Antibody
Code	BT-AP02828
Host	Rabbit
Isotype	IgG
Size	20ul, 50ul, 100ul
Immunogen	The antiserum was produced against synthesized peptide derived from human EDG3. AA range:1-50
Mol wt	42250
Species reactivity	Human
Clonality	Polyclonal
Recommended application	WB, IF, ELISA
Concentration	1 mg/ml
Full name	EDG-3 Antibody
Synonyms	S1PR3; EDG3; Sphingosine 1-phosphate receptor 3; S1P receptor 3; S1P3; Endothelial differentiation G-protein coupled receptor 3; Sphingosine 1-phosphate receptor Edg-3; S1P receptor Edg-3

This product is for research use only, not for use in human, therapeutic or diagnostic procedure.

Background

S1PR3 encodes a member of the EDG family of receptors, which are G protein-coupled receptors. This protein has been identified as a functional receptor for sphingosine 1-phosphate and likely contributes to the regulation of angiogenesis and vascular endothelial cell function.

Recommended Dilution

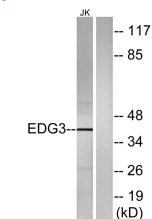
WB: 1: 500 - 1: 2000

IF: 1: 200 - 1: 1000

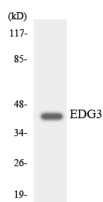
ELISA: 1: 5000

Not yet tested in other applications.

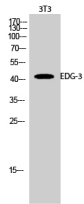
Images



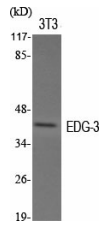
Western blot analysis of lysates from Jurkat cells, using EDG3 Antibody. The lane on the right is blocked with the synthesized peptide.



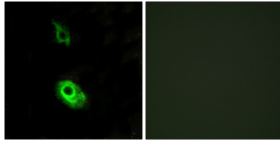
Western blot analysis of the lysates from K562 cells using EDG3 antibody.



Western Blot analysis of 3T3 cells using EDG-3 Polyclonal Antibody



Western Blot analysis of various cells using EDG-3 Polyclonal Antibody



Immunofluorescence analysis of HeLa cells, using EDG3 Antibody. The picture on the right is blocked with the synthesized peptide.

Storage

-20°C for one year

501 Changsheng S Rd, Nanhu Dist, Jiaxing, Zhejiang, China

Tel: 86 21 31007137 | E-mail: save@bt-laboratory.com | www.bt-laboratory.com