

EDG-4 Polyclonal Antibody

Description

Product type	Primary Antibody
Code	BT-AP02830
Host	Rabbit
Isotype	IgG
Size	20ul, 50ul, 100ul
Immunogen	The antiserum was produced against synthesized peptide derived from human EDG4. AA range:271-320
Mol wt	42250
Species reactivity	Human, Mouse, Monkey
Clonality	Polyclonal
Recommended application	WB, IF, ELISA
Concentration	1 mg/ml
Full name	EDG-4 Antibody
Synonyms	LPAR2; EDG4; LPA2; Lysophosphatidic acid receptor 2; LPA receptor 2; LPA-2; Lysophosphatidic acid receptor Edg-4

This product is for research use only, not for use in human, therapeutic or diagnostic procedure.

Background

S1PR3 encodes a member of the EDG family of receptors, which are G protein-coupled receptors. This protein has been identified as a functional receptor for sphingosine 1-phosphate and likely contributes to the regulation of angiogenesis and vascular endothelial cell function.

Recommended Dilution

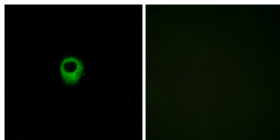
WB: 1: 500 - 1: 2000

IF: 1: 200 - 1: 1000

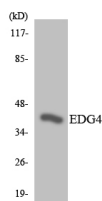
ELISA: 1: 40000

Not yet tested in other applications.

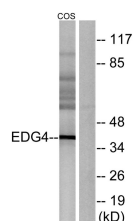
Images



Immunofluorescence analysis of MCF7 cells, using EDG4 Antibody. The picture on the right is blocked with the synthesized peptide.



Western blot analysis of the lysates from K562 cells using EDG4 antibody.



Western blot analysis of lysates from COS7 cells, using EDG4 Antibody. The lane on the right is blocked with the synthesized peptide.

Storage

-20°C for one year

501 Changsheng S Rd, Nanhu Dist, Jiaxing, Zhejiang, China

Tel: 86 21 31007137 | E-mail: save@bt-laboratory.com | www.bt-laboratory.com