

EDG-5 Polyclonal Antibody

Description

Product type	Primary Antibody
Code	BT-AP02831
Host	Rabbit
Isotype	IgG
Size	20ul, 50ul, 100ul
Immunogen	The antiserum was produced against synthesized peptide derived from human EDG5. AA range:261-310
Mol wt	38867
Species reactivity	Human, Mouse, Rat
Clonality	Polyclonal
Recommended application	WB, IHC-p, IF, ELISA
Concentration	1 mg/ml
Full name	EDG-5 Antibody
Synonyms	S1PR2; EDG5; Sphingosine 1-phosphate receptor 2; S1P receptor 2; S1P2; Endothelial differentiation G-protein coupled receptor 5; Sphingosine 1-phosphate receptor Edg-5; S1P receptor Edg-5

This product is for research use only, not for use in human, therapeutic or diagnostic procedure.

Background

S1PR2 encodes a member of the G protein-coupled receptors, as well as the EDG family of proteins. The encoded protein (sphingosine-1-phosphate receptor 2) is a receptor for sphingosine 1-phosphate, which participates in cell proliferation, survival, and transcriptional activation. Defects in S1PR2 have been associated with congenital profound deafness.

Recommended Dilution

WB: 1: 500 - 1: 2000

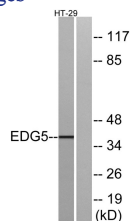
IHC: 1: 100 - 1: 300

IF: 1: 200 - 1: 1000

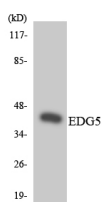
ELISA: 1: 40000

Not yet tested in other applications.

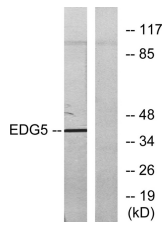
Images



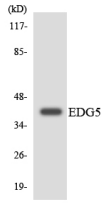
Western blot analysis of lysates from HT-29 cells, using EDG5 Antibody. The lane on the right is blocked with the synthesized peptide.



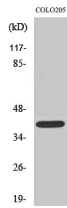
Western blot analysis of the lysates from HT-29 cells using EDG5 antibody.



Western blot analysis of lysates from COLO205 cells, using EDG5 Antibody. The lane on the right is blocked with the synthesized peptide.



Western blot analysis of the lysates from RAW264.7 cells using EDG5 antibody.



Western Blot analysis of various cells using EDG-5 Polyclonal Antibody

Storage

-20°C for one year

501 Changsheng S Rd, Nanhu Dist, Jiaxing, Zhejiang, China

Tel: 86 21 31007137 | E-mail: save@bt-laboratory.com | www.bt-laboratory.com