

EDG-7 Polyclonal Antibody

Description

Product type	Primary Antibody
Code	BT-AP02836
Host	Rabbit
Isotype	IgG
Size	20ul, 50ul, 100ul
Immunogen	The antiserum was produced against synthesized peptide derived from human EDG7. AA range:281-330
Mol wt	40128
Species reactivity	Human
Clonality	Polyclonal
Recommended application	WB, IHC-p, IF, ELISA
Concentration	1 mg/ml
Full name	EDG-7 Antibody
Synonyms	LPAR3; EDG7; LPA3; Lysophosphatidic acid receptor 3; LPA receptor 3; LPA-3; Lysophosphatidic acid receptor Edg-7

This product is for research use only, not for use in human, therapeutic or diagnostic procedure.

Background

LPAR3 encodes a member of the G protein-coupled receptor family, as well as the EDG family of proteins. This protein (lysophosphatidic acid receptor 3) functions as a cellular receptor for lysophosphatidic acid and mediates lysophosphatidic acid-evoked calcium mobilization. This receptor couples predominantly to G (q/11) alpha proteins.

Recommended Dilution

WB: 1: 500 - 1: 2000

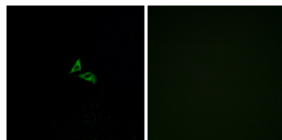
IHC: 1: 100 - 1: 300

IF: 1: 200 - 1: 1000

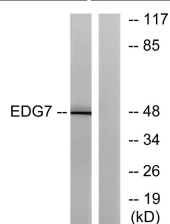
ELISA: 1: 40000

Not yet tested in other applications.

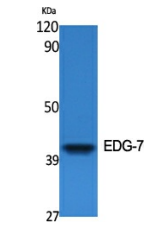
Images



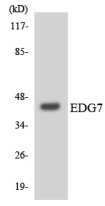
Immunofluorescence analysis of A549 cells, using EDG7 Antibody. The picture on the right is blocked with the synthesized peptide.



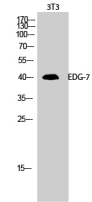
Western blot analysis of lysates from Jurkat cells, using EDG7 Antibody. The lane on the right is blocked with the synthesized peptide.



Western Blot analysis of various cells using EDG-7 Polyclonal Antibody



Western blot analysis of the lysates from 293 cells using EDG7 antibody.



Western Blot analysis of 3T3 cells using EDG-7 Polyclonal Antibody

Storage

-20°C for one year

501 Changsheng S Rd, Nanhu Dist, Jiaxing, Zhejiang, China

Tel: 86 21 31007137 | E-mail: save@bt-laboratory.com | www.bt-laboratory.com