

EDG-8 Polyclonal Antibody

Description

Product type	Primary Antibody
Code	BT-AP02837
Host	Rabbit
Isotype	IgG
Size	20ul, 50ul, 100ul
Immunogen	The antiserum was produced against synthesized peptide derived from human EDG8. AA range:335-384
Mol wt	41775
Species reactivity	Human
Clonality	Polyclonal
Recommended application	IHC-p, IF, ELISA
Concentration	1 mg/ml
Full name	EDG-8 Antibody
Synonyms	S1PR5; EDG8; Sphingosine 1-phosphate receptor 5; S1P receptor 5; S1P5; Endothelial differentiation G-protein-coupled receptor 8; Sphingosine 1-phosphate receptor Edg-8; S1P receptor Edg-8

This product is for research use only, not for use in human, therapeutic or diagnostic procedure.

Background

The lysosphingolipid sphingosine 1-phosphate (S1P) regulates cell proliferation, apoptosis, motility, and neurite retraction. Its actions may be both intracellular as a second messenger and extracellular as a receptor ligand. S1P and the structurally related lysolipid mediator lysophosphatidic acid (LPA) signal cells through a set of G protein-coupled receptors known as EDG receptors. Some EDG receptors (e.g. EDG1; MIM 601974) are S1P receptors; others (e.g. EDG2; MIM 602282) are LPA receptors.

Recommended Dilution

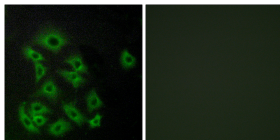
IHC: 1: 100 - 1: 300

IF: 1: 200 - 1: 1000

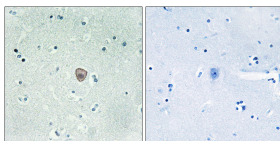
ELISA: 1: 5000

Not yet tested in other applications.

Images



Immunofluorescence analysis of A549 cells, using EDG8 Antibody. The picture on the right is blocked with the synthesized peptide.



Immunohistochemistry analysis of paraffin-embedded human brain tissue, using EDG8 Antibody. The picture on the right is blocked with the synthesized peptide.

Storage

-20°C for one year