

EEA1 Polyclonal Antibody

Description

Product type	Primary Antibody
Code	BT-AP02839
Host	Rabbit
Isotype	IgG
Size	20ul, 50ul, 100ul
Immunogen	The antiserum was produced against synthesized peptide derived from human EEA1. AA range:205-254
Mol wt	162466
Species reactivity	Human, Mouse
Clonality	Polyclonal
Recommended application	WB, ELISA
Concentration	1 mg/ml
Full name	EEA1 Antibody
Synonyms	EEA1; ZFYVE2; Early endosome antigen 1; Endosome-associated protein p162; Zinc finger FYVE domain-containing protein 2

This product is for research use only, not for use in human, therapeutic or diagnostic procedure.

Background

Binds phospholipid vesicles containing phosphatidylinositol 3-phosphate and participates in endosomal trafficking.

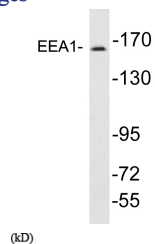
Recommended Dilution

WB: 1: 500 - 1: 2000

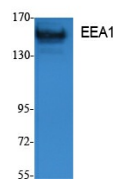
ELISA: 1: 20000

Not yet tested in other applications.

Images



Western blot analysis of lysates from A431 cells , using EEA1 antibody.



Western Blot analysis of extracts from K562 cells, using EEA1 Polyclonal Antibody. Secondary antibody was diluted at 1:20000

Storage

-20°C for one year