

EF-1Beta Polyclonal Antibody

Description

Product type	Primary Antibody
Code	BT-AP02848
Host	Rabbit
Isotype	IgG
Size	20ul, 50ul, 100ul
Immunogen	The antiserum was produced against synthesized peptide derived from human EF-1beta. AA range:83-132
Mol wt	24764
Species reactivity	Human, Mouse, Rat
Clonality	Polyclonal
Recommended application	WB, ELISA
Concentration	1 mg/ml
Full name	EF-1beta Antibody
Synonyms	EEF1B2; EEF1B; EF1B; Elongation factor 1-beta; EF-1-beta

This product is for research use only, not for use in human, therapeutic or diagnostic procedure.

Background

EEF1B2 encodes a translation elongation factor. Elongation factor 1-beta is a guanine nucleotide exchange factor involved in the transfer of aminoacylated tRNAs to the ribosome. Alternative splicing results in three transcript variants which differ only in the 5' UTR.

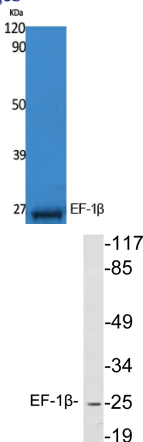
Recommended Dilution

WB: 1: 500 - 1: 2000

ELISA: 1: 20000

Not yet tested in other applications.

Images



Western Blot analysis of extracts from K562 cells, using EF-1 β Polyclonal Antibody. Secondary antibody was diluted at 1:20000

Western blot analysis of lysates from K562 cells, using EF-1 β antibody.

Storage

-20°C for one year