

EF-2 Polyclonal Antibody

Description

Product type	Primary Antibody
Code	BT-AP02849
Host	Rabbit
Isotype	IgG
Size	20ul, 50ul, 100ul
Immunogen	The antiserum was produced against synthesized peptide derived from human eEF2. AA range:31-80
Mol wt	95207
Species reactivity	Human, Mouse, Rat
Clonality	Polyclonal
Recommended application	WB, IHC-p, IF, ELISA
Concentration	1 mg/ml
Full name	EF-2 Antibody
Synonyms	EEF2; EF2; Elongation factor 2; EF-2

This product is for research use only, not for use in human, therapeutic or diagnostic procedure.

Background

EEF2 encodes a member of the GTP-binding translation elongation factor family. Eukaryotic translation elongation factor 2 is an essential factor for protein synthesis. It promotes the GTP-dependent translocation of the nascent protein chain from the A-site to the P-site of the ribosome. This protein is completely inactivated by EF-2 kinase phosphorylation.

Recommended Dilution

WB: 1: 500 - 1: 2000

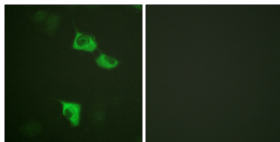
IHC: 1: 100 - 1: 300

IF: 1: 200 - 1: 1000

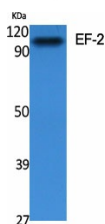
ELISA: 1: 5000

Not yet tested in other applications.

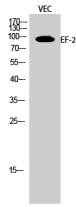
Images



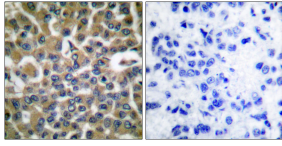
Immunofluorescence analysis of HUVEC cells, using eEF2 Antibody. The picture on the right is blocked with the synthesized peptide.



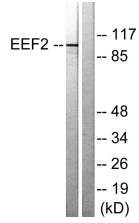
Western Blot analysis of various cells using EF-2 Polyclonal Antibody diluted at 1:2000



Western Blot analysis of VEC cells using EF-2 Polyclonal Antibody diluted at 1:2000



Immunohistochemistry analysis of paraffin-embedded human breast carcinoma tissue, using eEF2 Antibody. The picture on the right is blocked with the synthesized peptide.



Western blot analysis of lysates from NIH/3T3 cells, treated with serum 10% 30', using eEF2 Antibody. The lane on the right is blocked with the synthesized peptide.

Storage

-20°C for one year

501 Changsheng S Rd, Nanhu Dist, Jiaxing, Zhejiang, China

Tel: 86 21 31007137 | E-mail: save@bt-laboratory.com | www.bt-laboratory.com