

EF-Tu Polyclonal Antibody

Description

Product type	Primary Antibody
Code	BT-AP02855
Host	Rabbit
Isotype	IgG
Size	20ul, 50ul, 100ul
Immunogen	The antiserum was produced against synthesized peptide derived from human TUFM. AA range:301-350
Mol wt	49542
Species reactivity	Human, Mouse, Rat
Clonality	Polyclonal
Recommended application	WB, IHC-p, ELISA
Concentration	1 mg/ml
Full name	EF-Tu Antibody
Synonyms	TUFM; Elongation factor Tu; mitochondrial; EF-Tu; P43

This product is for research use only, not for use in human, therapeutic or diagnostic procedure.

Background

TUFM (Tu translation elongation factor, mitochondrial) encodes a protein which participates in protein translation in mitochondria. Mutations in TUFM have been associated with combined oxidative phosphorylation deficiency resulting in lactic acidosis and fatal encephalopathy. A pseudogene has been identified on chromosome 17.

Recommended Dilution

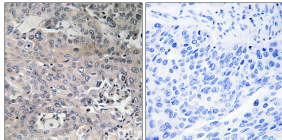
WB: 1: 500 - 1: 2000

IHC: 1: 100 - 1: 300

ELISA: 1: 40000

Not yet tested in other applications.

Images



Immunohistochemistry analysis of paraffin-embedded human breast carcinoma tissue, using TUFM Antibody. The picture on the right is blocked with the synthesized peptide.

Storage

-20°C for one year

501 Changsheng S Rd, Nanhu Dist, Jiaxing, Zhejiang, China

Tel: 86 21 31007137 | E-mail: save@bt-laboratory.com | www.bt-laboratory.com