

## EGFL5 Polyclonal Antibody

### Description

<b>Product type</b>	Primary Antibody
<b>Code</b>	BT-AP02860
<b>Host</b>	Rabbit
<b>Isotype</b>	IgG
<b>Size</b>	20ul, 50ul, 100ul
<b>Immunogen</b>	The antiserum was produced against synthesized peptide derived from human MEGF9. AA range:383-432
<b>Mol wt</b>	62984
<b>Species reactivity</b>	Human, Mouse, Rat
<b>Clonality</b>	Polyclonal
<b>Recommended application</b>	WB, ELISA
<b>Concentration</b>	1 mg/ml
<b>Full name</b>	EGFL5 Antibody
<b>Synonyms</b>	MEGF9; EGFL5; KIAA0818; Multiple epidermal growth factor-like domains protein 9; Multiple EGF-like domains protein 9; Epidermal growth factor-like protein 5; EGF-like protein 5

**This product is for research use only, not for use in human, therapeutic or diagnostic procedure.**

### Background

MEGF9 (Multiple EGF-like domains protein 9; also EGF-like protein 5) is a 63 kDa (predicted) novel transmembrane glycoprotein that shares some homology to beta -chains of laminin. It is expressed by hepatocytes, cerebellar Purkinje cells, Schwann cells, keratinocytes and intestinal epithelium. MEGF9 is suggested to participate in cell motility, and its absence correlates with tumor cell migration. Mature human MEGF9 is 572 amino acids (aa) in length. It is a single span type I transmembrane protein that contains a 484 aa extracellular region (aa 31-514) plus a 68 aa C-terminal cytoplasmic domain. The extracellular region possesses a lengthy Pro-rich region (aa 55-200), followed by five EGF-like domains (aa 204-451). MEGF9 may run at approximately 160 kDa in SDS-PAGE, suggesting either heavy glycosylation or dimerization. Over aa 36-514, human MEGF9 shares 76% aa sequence identity with mouse MEGF9.

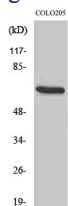
### Recommended Dilution

WB: 1: 500 - 1: 2000

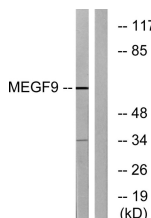
ELISA: 1: 40000

Not yet tested in other applications.

### Images



Western Blot analysis of various cells using EGFL5 Polyclonal Antibody diluted at 1:500



Western blot analysis of lysates from COLO cells, using MEGF9 Antibody. The lane on the right is blocked with the synthesized peptide.

## Storage

-20°C for one year

501 Changsheng S Rd, Nanhu Dist, Jiaxing, Zhejiang, China

Tel: 86 21 31007137 | E-mail: [save@bt-laboratory.com](mailto:save@bt-laboratory.com) | [www.bt-laboratory.com](http://www.bt-laboratory.com)