

GPAA1 Rabbit Polyclonal Antibody

Description

Product type	Primary Antibody
Code	BT-AP02870
Host	Rabbit
Isotype	IgG
Size	100ul, 50ul, 20ul
Immunogen	Synthesized peptide derived from human GPAA1
Mol wt	68310
Species reactivity	Human, Mouse
Clonality	Polyclonal
Recommended application	WB
Concentration	1 mg/ml
Full name	GPAA1
Synonyms	GPAA1

This product is for research use only, not for use in human, therapeutic or diagnostic procedure.

Background

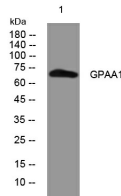
Posttranslational glycosylphosphatidylinositol (GPI) anchor attachment serves as a general mechanism for linking proteins to the cell surface membrane. The protein encoded by this gene presumably functions in GPI anchoring at the GPI transfer step. The mRNA transcript is ubiquitously expressed in both fetal and adult tissues. The anchor attachment protein 1 contains an N-terminal signal sequence| 1 cAMP- and cGMP-dependent protein kinase phosphorylation site| 1 leucine zipper pattern| 2 potential N-glycosylation sites| and 8 putative transmembrane domains.

Recommended Dilution

WB: 1: 500 - 1: 2000

Not yet tested in other applications.

Images



Western blot analysis of lysates from KB cells, primary antibody was diluted at 1:1000, 4°C overnight

Storage

-20°C for 1 year