

Egr-3 Polyclonal Antibody

Description

Product type	Primary Antibody
Code	BT-AP02878
Host	Rabbit
Isotype	IgG
Size	20ul, 50ul, 100ul
Immunogen	The antiserum was produced against synthesized peptide derived from human EGR3. AA range:338-387
Mol wt	42613
Species reactivity	Human, Mouse, Rat
Clonality	Polyclonal
Recommended application	IHC-p, ELISA
Concentration	1 mg/ml
Full name	Egr-3 Antibody
Synonyms	EGR3; PILOT; Early growth response protein 3; EGR-3; Zinc finger protein pilot

This product is for research use only, not for use in human, therapeutic or diagnostic procedure.

Background

EGR3 encodes a transcriptional regulator that belongs to the EGR family of C2H2-type zinc-finger proteins. It is an immediate-early growth response gene which is induced by mitogenic stimulation. The early growth response 3 encoded by EGR3 participates in the transcriptional regulation of genes in controlling biological rhythm. It may also play a role in a wide variety of processes including muscle development, lymphocyte development, endothelial cell growth and migration, and neuronal development. Alternative splicing results in multiple transcript variants encoding distinct isoforms.

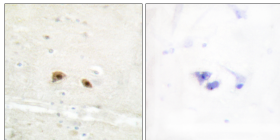
Recommended Dilution

IHC: 1: 100 - 1: 300

ELISA: 1: 10000

Not yet tested in other applications.

Images



Immunohistochemistry analysis of paraffin-embedded human brain tissue, using EGR3 Antibody. The picture on the right is blocked with the synthesized peptide.

Storage

-20°C for one year