

EID-1 Polyclonal Antibody

Description

Product type	Primary Antibody
Code	BT-AP02882
Host	Rabbit
Isotype	IgG
Size	20ul, 50ul, 100ul
Immunogen	The antiserum was produced against synthesized peptide derived from human EID1. AA range:71-120
Mol wt	20876
Species reactivity	Human
Clonality	Polyclonal
Recommended application	WB, IHC-p, IF, ELISA
Concentration	1 mg/ml
Full name	EID-1 Antibody
Synonyms	EID1; C15orf3; CRI1; RBP21; PNAS-22; PTD014; EP300-interacting inhibitor of differentiation 1; 21 kDa pRb-associated protein; CREBBP/EP300 inhibitory protein 1; E1A-like inhibitor of differentiation 1

This product is for research use only, not for use in human, therapeutic or diagnostic procedure.

Background

E1A-like inhibitor of differentiation-1 (EID-1), an acetyltransferase enzyme, binds both the retinoblastoma protein (Rb), a regulator of cell cycle and tissue specific transcription, and the adenovirus E1A-associated cellular p300 transcriptional co-activator protein. EID-1 inhibits cellular differentiation by blocking the histone acetyltransferase activity of p300. EID-1 also acetylates both histones and non-histone proteins such as NCOA3 co-activator. By acetylating histones, EID-1 gives a specific tag for transcriptional activation. In addition to binding Rb and p300, EID-1 also binds to phosphorylated CREB protein, mediating cAMP gene regulation. EID-1 augments the activity of phosphorylated CREB and activates transcription of cAMP responsive genes as a co-activator.

Recommended Dilution

WB: 1: 500 - 1: 2000

IHC: 1: 100 - 1: 300

IF: 1: 200 - 1: 1000

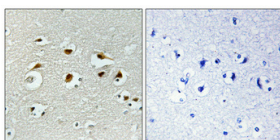
ELISA: 1: 10000

Not yet tested in other applications.

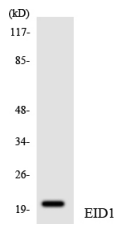
Images



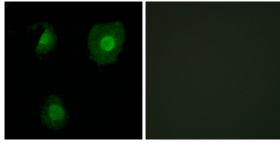
Western Blot analysis of various cells using EID-1 Polyclonal Antibody



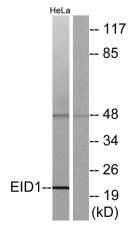
Immunohistochemical analysis of paraffin-embedded Human brain. Antibody was diluted at 1:100(4° overnight). High-pressure and temperature Tris-EDTA,pH8.0 was used for antigen retrieval. Negative contrl (right) obtained from antibody was pre-absorbed by immunogen peptide.



Western blot analysis of the lysates from HUVEC cells using EID1 antibody.



Immunofluorescence analysis of A549 cells, using EID1 Antibody. The picture on the right is blocked with the synthesized peptide.



Western blot analysis of lysates from HeLa cells, using EID1 Antibody. The lane on the right is blocked with the synthesized peptide.

Storage

-20°C for one year

501 Changsheng S Rd, Nanhu Dist, Jiaxing, Zhejiang, China

Tel: 86 21 31007137 | E-mail: save@bt-laboratory.com | www.bt-laboratory.com