

eIF2B Gamma Polyclonal Antibody

Description

Product type	Primary Antibody
Code	BT-AP02886
Host	Rabbit
Isotype	IgG
Size	20ul, 50ul, 100ul
Immunogen	Synthesized peptide derived from eIF2B γ . at AA range: 240-320
Mol wt	50240
Species reactivity	Human, Mouse
Clonality	Polyclonal
Recommended application	WB, ELISA
Concentration	1 mg/ml
Full name	eIF2Bgamma Antibody
Synonyms	EIF2B3; Translation initiation factor eIF-2B subunit gamma; eIF-2B GDP-GTP exchange factor subunit gamma

This product is for research use only, not for use in human, therapeutic or diagnostic procedure.

Background

Eukaryotic translation initiation factor 2B subunit gamma encoded by EIF2B3 is one of the subunits of initiation factor eIF2B, which catalyzes the exchange of eukaryotic initiation factor 2-bound GDP for GTP. It has also been found to function as a cofactor of hepatitis C virus internal ribosome entry site-mediated translation. Mutations in EIF2B3 have been associated with leukodystrophy with vanishing white matter. Alternatively spliced transcript variants encoding different isoforms have been found for EIF2B3.

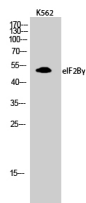
Recommended Dilution

WB: 1: 500 - 1: 2000

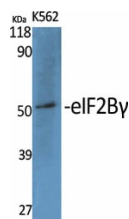
ELISA: 1: 5000

Not yet tested in other applications.

Images



Western Blot analysis of K562 cells using eIF2B γ Polyclonal Antibody diluted at 1:1000



Western Blot analysis of various cells using eIF2B γ Polyclonal Antibody diluted at 1:1000

Storage

-20°C for one year

501 Changsheng S Rd, Nanhu Dist, Jiaxing, Zhejiang, China

Tel: 86 21 31007137 | E-mail: save@bt-laboratory.com | www.bt-laboratory.com