

eIF2B Delta Polyclonal Antibody

Description

Product type	Primary Antibody
Code	BT-AP02887
Host	Rabbit
Isotype	IgG
Size	20ul, 50ul, 100ul
Immunogen	The antiserum was produced against synthesized peptide derived from human EIF2B4. AA range:226-275
Mol wt	57557
Species reactivity	Human, Mouse, Rat
Clonality	Polyclonal
Recommended application	WB, ELISA
Concentration	1 mg/ml
Full name	eIF2Bdelta Antibody
Synonyms	EIF2B4; EIF2BD; Translation initiation factor eIF-2B subunit delta; eIF-2B GDP-GTP exchange factor subunit delta

This product is for research use only, not for use in human, therapeutic or diagnostic procedure.

Background

Eukaryotic initiation factor 2B (EIF2B), which is necessary for protein synthesis, is a GTP exchange factor composed of five different subunits. The protein encoded by EIF2B4 (eukaryotic translation initiation factor 2B subunit delta) is the fourth, or delta, subunit. Defects in EIF2B4 are a cause of leukoencephalopathy with vanishing white matter (VWM) and ovarioleukodystrophy. Multiple transcript variants encoding different isoforms have been found for EIF2B4.

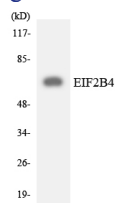
Recommended Dilution

WB: 1: 500 - 1: 2000

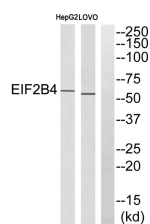
ELISA: 1: 5000

Not yet tested in other applications.

Images



Western blot analysis of the lysates from HeLa cells using EIF2B4 antibody.



Western blot analysis of EIF2B4 Antibody. The lane on the right is blocked with the EIF2B4 peptide.

Storage

-20°C for one year

501 Changsheng S Rd, Nanhu Dist, Jiaxing, Zhejiang, China

Tel: 86 21 31007137 | E-mail: save@bt-laboratory.com | www.bt-laboratory.com