

## eIF2 Beta Polyclonal Antibody

### Description

Product type	Primary Antibody
Code	BT-AP02889
Host	Rabbit
Isotype	IgG
Size	20ul, 50ul, 100ul
Immunogen	The antiserum was produced against synthesized peptide derived from human EIF2S2. AA range:61-110
Mol wt	38388
Species reactivity	Human
Clonality	Polyclonal
Recommended application	WB, ELISA
Concentration	1 mg/ml
Full name	eIF2beta Antibody
Synonyms	EIF2S2; EIF2B; Eukaryotic translation initiation factor 2 subunit 2; Eukaryotic translation initiation factor 2 subunit beta; eIF-2-beta

This product is for research use only, not for use in human, therapeutic or diagnostic procedure.

### Background

Eukaryotic translation initiation factor 2 (EIF-2) functions in the early steps of protein synthesis by forming a ternary complex with GTP and initiator tRNA and binding to a 40S ribosomal subunit. EIF-2 is composed of three subunits, alpha, beta, and gamma, with the protein encoded by EIF2S2 (eukaryotic translation initiation factor 2 subunit beta) representing the beta subunit. The beta subunit catalyzes the exchange of GDP for GTP, which recycles the EIF-2 complex for another round of initiation. Multiple transcript variants encoding different isoforms have been found for EIF2S2.

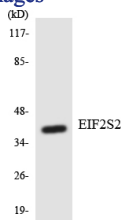
### Recommended Dilution

WB: 1: 500 - 1: 2000

ELISA: 1: 20000

Not yet tested in other applications.

### Images



Western blot analysis of the lysates from HT-29 cells using EIF2S2 antibody.

### Storage

-20°C for one year