

eIF2 Beta Polyclonal Antibody

Description

Product type	Primary Antibody
Code	BT-AP02890
Host	Rabbit
Isotype	IgG
Size	20ul, 50ul, 100ul
Immunogen	Synthesized peptide derived from eIF2 β . at AA range: 10-90
Mol wt	38388
Species reactivity	Human, Mouse
Clonality	Polyclonal
Recommended application	WB, IHC-p, ELISA
Concentration	1 mg/ml
Full name	eIF2beta Antibody
Synonyms	EIF2S2; EIF2B; Eukaryotic translation initiation factor 2 subunit 2; Eukaryotic translation initiation factor 2 subunit beta; eIF-2-beta

This product is for research use only, not for use in human, therapeutic or diagnostic procedure.

Background

Eukaryotic translation initiation factor 2 (EIF-2) functions in the early steps of protein synthesis by forming a ternary complex with GTP and initiator tRNA and binding to a 40S ribosomal subunit. EIF-2 is composed of three subunits, alpha, beta, and gamma, with the protein encoded by EIF2S2 (eukaryotic translation initiation factor 2 subunit beta) representing the beta subunit. The beta subunit catalyzes the exchange of GDP for GTP, which recycles the EIF-2 complex for another round of initiation. Multiple transcript variants encoding different isoforms have been found for EIF2S2.

Recommended Dilution

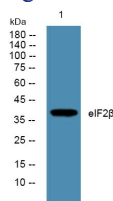
WB: 1: 500 - 1: 2000

IHC: 1: 100 - 1: 300

ELISA: 1: 10000

Not yet tested in other applications.

Images



Western blot analysis of lysates from K562 cells, primary antibody was diluted at 1:1000, 4°over night

Storage

-20°C for one year