

## eIF3K Polyclonal Antibody

### Description

<b>Product type</b>	Primary Antibody
<b>Code</b>	BT-AP02892
<b>Host</b>	Rabbit
<b>Isotype</b>	IgG
<b>Size</b>	20ul, 50ul, 100ul
<b>Immunogen</b>	The antiserum was produced against synthesized peptide derived from human EIF3K. AA range:61-110
<b>Mol wt</b>	25060
<b>Species reactivity</b>	Human, Mouse
<b>Clonality</b>	Polyclonal
<b>Recommended application</b>	WB, ELISA
<b>Concentration</b>	1 mg/ml
<b>Full name</b>	eIF3K Antibody
<b>Synonyms</b>	EIF3K; EIF3S12; ARG134; HSPC029; MSTP001; PTD001; Eukaryotic translation initiation factor 3 subunit K; eIF3k; Eukaryotic translation initiation factor 3 subunit 12; Muscle-specific gene M9 protein; P

**This product is for research use only, not for use in human, therapeutic or diagnostic procedure.**

### Background

The 700-kD eukaryotic translation initiation factor-3 (eIF3) is the largest eIF and contains at least 12 subunits, including EIF2S12. eIF3 plays an essential role in translation by binding directly to the 40S ribosomal subunit and promoting formation of the 40S preinitiation complex (Mayeur et al., 2003 [PubMed 14519125]).

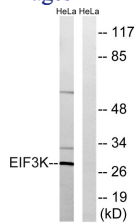
### Recommended Dilution

WB: 1: 500 - 1: 2000

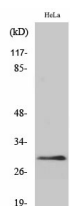
ELISA: 1: 40000

Not yet tested in other applications.

### Images



Western blot analysis of lysates from HeLa cells, using EIF3K Antibody. The lane on the right is blocked with the synthesized peptide.



Western Blot analysis of various cells using eIF3K Polyclonal Antibody diluted at 1:1000

## Storage

-20°C for one year

501 Changsheng S Rd, Nanhu Dist, Jiaxing, Zhejiang, China

Tel: 86 21 31007137 | E-mail: [save@bt-laboratory.com](mailto:save@bt-laboratory.com) | [www.bt-laboratory.com](http://www.bt-laboratory.com)