

eIF4E3 Polyclonal Antibody

Description

Product type	Primary Antibody
Code	BT-AP02899
Host	Rabbit
Isotype	IgG
Size	20ul, 50ul, 100ul
Immunogen	The antiserum was produced against synthesized peptide derived from human EIF4E3. AA range:141-190
Mol wt	24441
Species reactivity	Human, Mouse, Rat
Clonality	Polyclonal
Recommended application	WB, ELISA
Concentration	1 mg/ml
Full name	eIF4E3 Antibody
Synonyms	EIF4E3; Eukaryotic translation initiation factor 4E type 3; eIF-4E type 3; eIF-4E3; eIF4E type 3; eIF4E-3

This product is for research use only, not for use in human, therapeutic or diagnostic procedure.

Background

EIF4E3 belongs to the EIF4E family of translational initiation factors that interact with the 5-prime cap structure of mRNA and recruit mRNA to the ribosome (Joshi et al. 2004 [PubMed 15153109]).

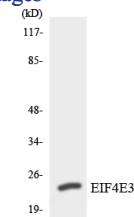
Recommended Dilution

WB: 1: 500 - 1: 2000

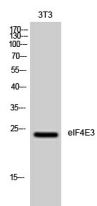
ELISA: 1: 10000

Not yet tested in other applications.

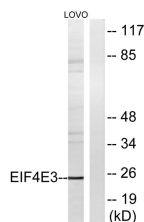
Images



Western blot analysis of the lysates from HepG2 cells using EIF4E3 antibody.



Western Blot analysis of 3T3 cells using eIF4E3 Polyclonal Antibody diluted at 1:1000



Western blot analysis of lysates from LOVO cells, using EIF4E3 Antibody. The lane on the right is blocked with the synthesized peptide.

Storage

-20°C for one year

501 Changsheng S Rd, Nanhu Dist, Jiaxing, Zhejiang, China

Tel: 86 21 31007137 | E-mail: save@bt-laboratory.com | www.bt-laboratory.com