

eIF5A2 Polyclonal Antibody

Description

Product type	Primary Antibody
Code	BT-AP02902
Host	Rabbit
Isotype	IgG
Size	20ul, 50ul, 100ul
Immunogen	The antiserum was produced against synthesized peptide derived from human eIF5A2. AA range:78-127
Mol wt	16793
Species reactivity	Human, Mouse
Clonality	Polyclonal
Recommended application	WB, ELISA
Concentration	1 mg/ml
Full name	eIF5A2 Antibody
Synonyms	EIF5A2; Eukaryotic translation initiation factor 5A-2; eIF-5A-2; eIF-5A2; Eukaryotic initiation factor 5A isoform 2

This product is for research use only, not for use in human, therapeutic or diagnostic procedure.

Background

EIF5A2 is a novel phylogenetically conserved gene for eIF5A and localized in an area of the genome often noted for chromosomal instability in cancers. EIF5A2 expression has been observed in testis, brain and colorectal adenocarcinoma.

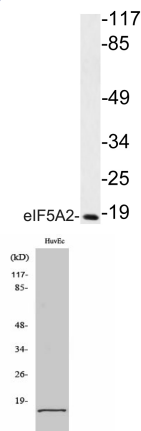
Recommended Dilution

WB: 1: 500 - 1: 2000

ELISA: 1: 10000

Not yet tested in other applications.

Images



Western blot analysis of lysate from HUVEC cells, using eIF5A2 antibody.

Western Blot analysis of various cells using eIF5A2 Polyclonal Antibody diluted at 1:1000

Storage

-20°C for one year

