

## Elf-5 Polyclonal Antibody

### Description

<b>Product type</b>	Primary Antibody
<b>Code</b>	BT-AP02910
<b>Host</b>	Rabbit
<b>Isotype</b>	IgG
<b>Size</b>	20ul, 50ul, 100ul
<b>Immunogen</b>	The antiserum was produced against synthesized peptide derived from human ELF5. AA range:191-240
<b>Mol wt</b>	31263
<b>Species reactivity</b>	Human, Mouse
<b>Clonality</b>	Polyclonal
<b>Recommended application</b>	WB, IF, ELISA
<b>Concentration</b>	1 mg/ml
<b>Full name</b>	Elf-5 Antibody
<b>Synonyms</b>	ELF5; ESE2; ETS-related transcription factor Elf-5; E74-like factor 5; Epithelium-restricted ESE-1-related Ets factor; Epithelium-specific Ets transcription factor 2; ESE-2

**This product is for research use only, not for use in human, therapeutic or diagnostic procedure.**

### Background

E74 like ETS transcription factor 5 encoded by ELF5 is a member of an epithelium-specific subclass of the Ets transcription factor family. In addition to its role in regulating the later stages of terminal differentiation of keratinocytes, it appears to regulate a number of epithelium-specific genes found in tissues containing glandular epithelium such as salivary gland and prostate. It has very low affinity to DNA due to its negative regulatory domain at the amino terminus. Several alternatively spliced transcript variants encoding different isoforms have been described for ELF5.

### Recommended Dilution

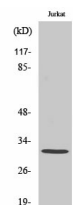
WB: 1: 500 - 1: 2000

IF: 1: 200 - 1: 1000

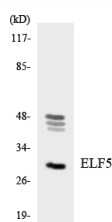
ELISA: 1: 20000

Not yet tested in other applications.

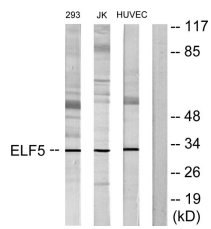
### Images



Western Blot analysis of various cells using Elf-5 Polyclonal Antibody cells nucleus.



Western blot analysis of the lysates from HT-29 cells using ELF5 antibody.



Western blot analysis of lysates from Jurkat, 293, and HUVEC cells, using ELF5 Antibody. The lane on the right is blocked with the synthesized peptide.

### Storage

-20°C for one year

501 Changsheng S Rd, Nanhu Dist, Jiaxing, Zhejiang, China

Tel: 86 21 31007137 | E-mail: [save@bt-laboratory.com](mailto:save@bt-laboratory.com) | [www.bt-laboratory.com](http://www.bt-laboratory.com)