

## Elk-1 Polyclonal Antibody

### Description

Product type	Primary Antibody
Code	BT-AP02911
Host	Rabbit
Isotype	IgG
Size	20ul, 50ul, 100ul
Immunogen	The antiserum was produced against synthesized peptide derived from human Elk1. AA range:379-428
Mol wt	44888
Species reactivity	Human, Mouse, Rat
Clonality	Polyclonal
Recommended application	IHC-p, WB, ELISA
Concentration	1 mg/ml
Full name	Elk-1 Antibody
Synonyms	ELK1; ETS domain-containing protein Elk-1

This product is for research use only, not for use in human, therapeutic or diagnostic procedure.

### Background

ELK1 is a member of the Ets family of transcription factors and of the ternary complex factor (TCF) subfamily. Proteins of the TCF subfamily form a ternary complex by binding to the the serum response factor and the serum response element in the promoter of the c-fos proto-oncogene. The protein encoded by ELK1 is a nuclear target for the ras-raf-MAPK signaling cascade. ELK1 produces multiple isoforms by using alternative translational start codons and by alternative splicing. Related pseudogenes have been identified on chromosomes 7 and 14.

### Recommended Dilution

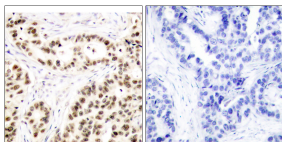
WB: 1: 500 - 2000

ELISA: 1: 20000

IHC: 1: 100 - 1: 300

Not yet tested in other applications.

### Images



Immunohistochemistry analysis of paraffin-embedded human breast carcinoma tissue, using Elk1 Antibody. The picture on the right is blocked with the synthesized peptide.

### Storage

-20°C for one year