

Elk-1 Polyclonal Antibody

Description

Product type	Primary Antibody
Code	BT-AP02912
Host	Rabbit
Isotype	IgG
Size	20ul, 50ul, 100ul
Immunogen	The antiserum was produced against synthesized peptide derived from human Elk1. AA range:356-405
Mol wt	44888
Species reactivity	Human, Mouse, Rat
Clonality	Polyclonal
Recommended application	WB, IHC-p, IP, ELISA
Concentration	1 mg/ml
Full name	Elk-1 Antibody
Synonyms	ELK1; ETS domain-containing protein Elk-1

This product is for research use only, not for use in human, therapeutic or diagnostic procedure.

Background

ELK1 is a member of the Ets family of transcription factors and of the ternary complex factor (TCF) subfamily. Proteins of the TCF subfamily form a ternary complex by binding to the the serum response factor and the serum response element in the promoter of the c-fos proto-oncogene. The protein encoded by this gene is a nuclear target for the ras-raf-MAPK signaling cascade. This gene produces multiple isoforms by using alternative translational start codons and by alternative splicing. Related pseudogenes have been identified on chromosomes 7 and 14.

Recommended Dilution

WB: 1: 500 - 1: 2000

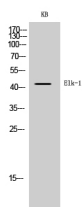
IHC: 1: 100 - 1: 300

ELISA: 1: 20000

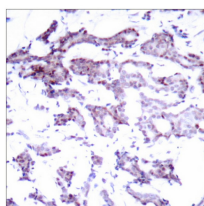
IP: 2 - 5 ug: mg lysate

Not yet tested in other applications.

Images

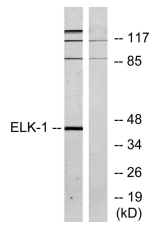


Western Blot analysis of KB cells using Elk-1 Polyclonal Antibody diluted at 1:500 cells nucleus.



Immunohistochemistry analysis of paraffin-embedded human breast carcinoma tissue, using Elk1 Antibody.

The picture on the right is blocked with the synthesized peptide.



Western blot analysis of lysates from HeLa cells, treated with heat shock, using Elk1 Antibody. The lane on the right is blocked with the synthesized peptide.

Storage

-20°C for one year

501 Changsheng S Rd, Nanhu Dist, Jiaxing, Zhejiang, China

Tel: 86 21 31007137 | E-mail: save@bt-laboratory.com | www.bt-laboratory.com