

ELL Polyclonal Antibody

Description

Product type	Primary Antibody
Code	BT-AP02915
Host	Rabbit
Isotype	IgG
Size	20ul, 50ul, 100ul
Immunogen	The antiserum was produced against synthesized peptide derived from human ELL. AA range:91-140
Mol wt	68265
Species reactivity	Human, Mouse
Clonality	Polyclonal
Recommended application	WB, IHC-p, ELISA
Concentration	1 mg/ml
Full name	ELL Antibody
Synonyms	ELL; C19orf17; RNA polymerase II elongation factor ELL; Eleven-nineteen lysine-rich leukemia protein

This product is for research use only, not for use in human, therapeutic or diagnostic procedure.

Background

ELL is an elongation factor that increase the catalytic rate of RNA polymerase II transcription via suppressing transient pausing by the polymerase at multiple sites along the DNA. Also it's the second elongation factor to be involved in oncogenesis which is a transcription factor regulated by the product of the von Hippel-Lindau tumor suppressor. There are two transcripts variants in mRNA level, one is 4.4 kb transcript and the other is 2.8 kb transcript.

Recommended Dilution

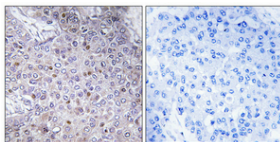
WB: 1: 500 - 1: 2000

IHC: 1: 100 - 1: 300

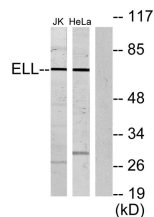
ELISA: 1: 20000

Not yet tested in other applications.

Images



Immunohistochemical analysis of paraffin-embedded Human breast cancer. Antibody was diluted at 1:100(4° overnight). High-pressure and temperature Tris-EDTA,pH8.0 was used for antigen retrieval. Negative contrl (right) obtained from antibody was pre-absorbed by immunogen peptide.



Western blot analysis of lysates from Jurkat and HeLa cells, using ELL Antibody. The lane on the right is blocked with the synthesized peptide.

Storage

-20°C for one year

501 Changsheng S Rd, Nanhu Dist, Jiaxing, Zhejiang, China

Tel: 86 21 31007137 | E-mail: save@bt-laboratory.com | www.bt-laboratory.com