

## ELOVL3 Polyclonal Antibody

### Description

<b>Product type</b>	Primary Antibody
<b>Code</b>	BT-AP02928
<b>Host</b>	Rabbit
<b>Isotype</b>	IgG
<b>Size</b>	20ul, 50ul, 100ul
<b>Immunogen</b>	The antiserum was produced against synthesized peptide derived from human ELOVL3. AA range:31-80
<b>Mol wt</b>	31500
<b>Species reactivity</b>	Human
<b>Clonality</b>	Polyclonal
<b>Recommended application</b>	IHC-p, ELISA
<b>Concentration</b>	1 mg/ml
<b>Full name</b>	ELOVL3 Antibody
<b>Synonyms</b>	ELOVL3; CIG30; Elongation of very long chain fatty acids protein 3; 3-keto acyl-CoA synthase ELOVL3; Cold-inducible glycoprotein of 30 kDa; ELOVL fatty acid elongase 3; ELOVL FA elongase 3

**This product is for research use only, not for use in human, therapeutic or diagnostic procedure.**

### Background

ELOVL3 (ELOVL fatty acid elongase 3) encodes a protein that belongs to the GNS1/SUR4 family. Members of this family play a role in elongation of long chain fatty acids to provide precursors for synthesis of sphingolipids and ceramides.

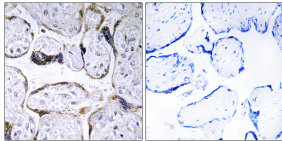
### Recommended Dilution

IHC: 1: 100 - 1: 300

ELISA: 1: 20000

Not yet tested in other applications.

### Images



Immunohistochemistry analysis of paraffin-embedded human placenta, using ELOVL3 Antibody. The picture on the right is blocked with the synthesized peptide.

### Storage

-20°C for one year

501 Changsheng S Rd, Nanhu Dist, Jiaxing, Zhejiang, China

Tel: 86 21 31007137 | E-mail: [save@bt-laboratory.com](mailto:save@bt-laboratory.com) | [www.bt-laboratory.com](http://www.bt-laboratory.com)