

## ELOVL5 Polyclonal Antibody

### Description

<b>Product type</b>	Primary Antibody
<b>Code</b>	BT-AP02930
<b>Host</b>	Rabbit
<b>Isotype</b>	IgG
<b>Size</b>	20ul, 50ul, 100ul
<b>Immunogen</b>	The antiserum was produced against synthesized peptide derived from human ELOVL5. AA range:250-299
<b>Mol wt</b>	35293
<b>Species reactivity</b>	Human
<b>Clonality</b>	Polyclonal
<b>Recommended application</b>	WB, IHC-p, ELISA
<b>Concentration</b>	1 mg/ml
<b>Full name</b>	ELOVL5 Antibody
<b>Synonyms</b>	ELOVL5; ELOVL2; Elongation of very long chain fatty acids protein 5; 3-keto acyl-CoA synthase ELOVL5; ELOVL fatty acid elongase 5; ELOVL FA elongase 5; Fatty acid elongase 1; hELO1

**This product is for research use only, not for use in human, therapeutic or diagnostic procedure.**

### Background

ELOVL5 (ELOVL fatty acid elongase 5) belongs to the ELO family. It is highly expressed in the adrenal gland and testis, and encodes a multi-pass membrane protein that is localized in the endoplasmic reticulum. This protein is involved in the elongation of long-chain polyunsaturated fatty acids. Mutations in ELOVL5 have been associated with spinocerebellar ataxia-38 (SCA38). Alternatively spliced transcript variants have been found for ELOVL5.

### Recommended Dilution

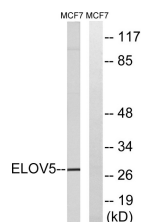
WB: 1: 500 - 1: 2000

IHC: 1: 100 - 1: 300

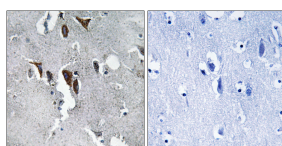
ELISA: 1: 40000

Not yet tested in other applications.

### Images



Western blot analysis of lysates from MCF-7 cells, using ELOVL5 Antibody. The lane on the right is blocked with the synthesized peptide.



Immunohistochemistry analysis of paraffin-embedded human brain tissue, using ELOVL5 Antibody. The picture on the right is blocked with the synthesized peptide.

### Storage

-20°C for one year

501 Changsheng S Rd, Nanhu Dist, Jiaxing, Zhejiang, China

Tel: 86 21 31007137 | E-mail: [save@bt-laboratory.com](mailto:save@bt-laboratory.com) | [www.bt-laboratory.com](http://www.bt-laboratory.com)