

ELOVL6 Polyclonal Antibody

Description

| | |
|--------------------------------|--|
| Product type | Primary Antibody |
| Code | BT-AP02931 |
| Host | Rabbit |
| Isotype | IgG |
| Size | 20ul, 50ul, 100ul |
| Immunogen | The antiserum was produced against synthesized peptide derived from human ELOVL6. AA range:21-70 |
| Mol wt | 31376 |
| Species reactivity | Human, Mouse, Rat |
| Clonality | Polyclonal |
| Recommended application | WB, ELISA |
| Concentration | 1 mg/ml |
| Full name | ELOVL6 Antibody |
| Synonyms | ELOVL6; FACE; LCE; Elongation of very long chain fatty acids protein 6; 3-keto acyl-CoA synthase ELOVL6; ELOVL fatty acid elongase 6; ELOVL FA elongase 6; Fatty acid elongase 2; hELO2; Fatty acyl-CoA |

This product is for research use only, not for use in human, therapeutic or diagnostic procedure.

Background

Fatty acid elongases (EC 6.2.1.3), such as ELOVL6, use malonyl-CoA as a 2-carbon donor in the first and rate-limiting step of fatty acid elongation (Moon et al., 2001 [PubMed 11567032]).

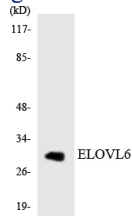
Recommended Dilution

WB: 1: 500 - 1: 2000

ELISA: 1: 10000

Not yet tested in other applications.

Images



Western blot analysis of the lysates from K562 cells using ELOVL6 antibody.



Western Blot analysis of various cells using ELOVL6 Polyclonal Antibody

Storage

-20°C for one year

501 Changsheng S Rd, Nanhu Dist, Jiaxing, Zhejiang, China

Tel: 86 21 31007137 | E-mail: save@bt-laboratory.com | www.bt-laboratory.com