

EMR1 Polyclonal Antibody

Description

Product type	Primary Antibody
Code	BT-AP02939
Host	Rabbit
Isotype	IgG
Size	20ul, 50ul, 100ul
Immunogen	The antiserum was produced against synthesized peptide derived from human EMR1. AA range:818-867
Mol wt	97625
Species reactivity	Human
Clonality	Polyclonal
Recommended application	WB, ELISA
Concentration	1 mg/ml
Full name	EMR1 Antibody
Synonyms	EMR1; TM7LN3; EGF-like module-containing mucin-like hormone receptor-like 1; EGF-like module receptor 1; EMR1 hormone receptor

This product is for research use only, not for use in human, therapeutic or diagnostic procedure.

Background

ADGRE1 encodes adhesion G protein-coupled receptor E1 that has a domain resembling seven transmembrane G protein-coupled hormone receptors (7TM receptors) at its C-terminus. The N-terminus of the encoded protein has six EGF-like modules, separated from the transmembrane segments by a serine/threonine-rich domain, a feature reminiscent of mucin-like, single-span, integral membrane glycoproteins with adhesive properties. Multiple alternatively spliced transcript variants encoding different isoforms have been found for this gene.

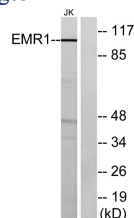
Recommended Dilution

WB: 1: 500 - 1: 2000

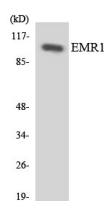
ELISA: 1: 5000

Not yet tested in other applications.

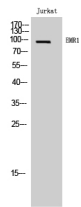
Images



Western blot analysis of lysates from Jurkat cells, using EMR1 Antibody. The lane on the right is blocked with the synthesized peptide.



Western blot analysis of the lysates from HUVEC cells using EMR1 antibody.



Western Blot analysis of Jurkat cells using EMR1 Polyclonal Antibody

Storage

-20°C for one year

501 Changsheng S Rd, Nanhu Dist, Jiaxing, Zhejiang, China

Tel: 86 21 31007137 | E-mail: save@bt-laboratory.com | www.bt-laboratory.com