

EMR2 Polyclonal Antibody

Description

Product type	Primary Antibody
Code	BT-AP02941
Host	Rabbit
Isotype	IgG
Size	20ul, 50ul, 100ul
Immunogen	The antiserum was produced against synthesized peptide derived from human EMR2. AA range:765-814
Mol wt	90472
Species reactivity	Human
Clonality	Polyclonal
Recommended application	WB, IF, ELISA
Concentration	1 mg/ml
Full name	EMR2 Antibody
Synonyms	EMR2; EGF-like module-containing mucin-like hormone receptor-like 2; EGF-like module receptor 2; CD antigen CD312

This product is for research use only, not for use in human, therapeutic or diagnostic procedure.

Background

ADGRE2 encodes a member of the class B seven-span transmembrane (TM7) subfamily of G-protein coupled receptors. These proteins are characterized by an extended extracellular region with a variable number of N-terminal epidermal growth factor-like domains coupled to a TM7 domain via a mucin-like spacer domain. The encoded protein is expressed mainly in myeloid cells where it promotes cell-cell adhesion through interaction with chondroitin sulfate chains. ADGRE2 is situated in a cluster of related genes on chromosome 19. Alternatively spliced transcript variants encoding multiple isoforms have been observed for this gene.

Recommended Dilution

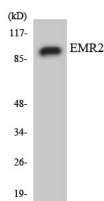
WB: 1: 500 - 1: 2000

IF: 1: 200 - 1: 1000

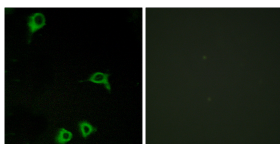
ELISA: 1: 20000

Not yet tested in other applications.

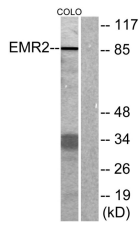
Images



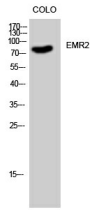
Western blot analysis of the lysates from HUVEC cells using EMR2 antibody.



Immunofluorescence analysis of COS7 cells, using EMR2 Antibody. The picture on the right is blocked with the synthesized peptide.



Western blot analysis of lysates from COLO cells, using EMR2 Antibody. The lane on the right is blocked with the synthesized peptide.



Western Blot analysis of COLO cells using EMR2 Polyclonal Antibody

Storage

-20°C for one year

501 Changsheng S Rd, Nanhu Dist, Jiaxing, Zhejiang, China

Tel: 86 21 31007137 | E-mail: save@bt-laboratory.com | www.bt-laboratory.com