

## EMR3 Polyclonal Antibody

### Description

Product type	Primary Antibody
Code	BT-AP02943
Host	Rabbit
Isotype	IgG
Size	20ul, 50ul, 100ul
Immunogen	The antiserum was produced against synthesized peptide derived from human EMR3. AA range:603-652
Mol wt	72593
Species reactivity	Human
Clonality	Polyclonal
Recommended application	WB, IF, ELISA
Concentration	1 mg/ml
Full name	EMR3 Antibody
Synonyms	EMR3; EGF-like module-containing mucin-like hormone receptor-like 3; EGF-like module receptor 3

This product is for research use only, not for use in human, therapeutic or diagnostic procedure.

### Background

ADGRE3 (adhesion G protein-coupled receptor E3) encodes a member of the class B seven-span transmembrane (TM7) receptor family expressed predominantly by cells of the immune system. Family members are characterized by an extended extracellular region with a variable number of N-terminal epidermal growth factor (EGF)-like domains coupled to a TM7 domain via a mucin-like spacer domain. ADGRE3 is closely linked to the gene encoding egf-like molecule containing mucin-like hormone receptor 2 on chromosome 19. This protein may play a role in myeloid-myeloid interactions during immune and inflammatory responses. Alternative splicing results in multiple transcript variants encoding different isoforms.

### Recommended Dilution

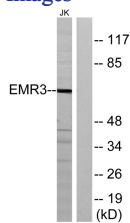
WB: 1: 500 - 1: 2000

IF: 1: 200 - 1: 1000

ELISA: 1: 10000

Not yet tested in other applications.

### Images



Western blot analysis of lysates from Jurkat cells, using EMR3 Antibody. The lane on the right is blocked with the synthesized peptide.

### Storage

-20°C for one year