

EMR4 Polyclonal Antibody

Description

Product type	Primary Antibody
Code	BT-AP02944
Host	Rabbit
Isotype	IgG
Size	20ul, 50ul, 100ul
Immunogen	The antiserum was produced against synthesized peptide derived from human EMR4P. AA range:101-150
Mol wt	50903
Species reactivity	Human, Monkey
Clonality	Polyclonal
Recommended application	WB, IF, ELISA
Concentration	1 mg/ml
Full name	EMR4 Antibody
Synonyms	EMR4P; EMR4; GPR127; PGR16; Putative EGF-like module-containing mucin-like hormone receptor-like 4; EGF-like module receptor 4; G-protein coupled receptor 127; G-protein coupled receptor PGR16

This product is for research use only, not for use in human, therapeutic or diagnostic procedure.

Background

EMR4P is a member of the EGF-TM7 receptor gene family which is thought to play a role in leukocyte adhesion and migration. In other vertebrates, including nonhuman primates, EMR4P encodes a protein containing N-terminal EGF domains and a C-terminal transmembrane domain. Sequence evidence for the human gene, however, indicates nucleotide deletion in the genomic sequence would result in frameshift and early termination of translation. A protein expressed by EMR4P would be soluble rather than expressed on the cell surface. As the encoded protein has not been detected, EMR4P may represent a transcribed pseudogene.

Recommended Dilution

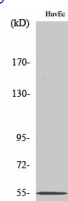
WB: 1: 500 - 1: 2000

IF: 1: 200 - 1: 1000

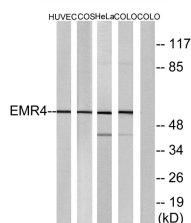
ELISA: 1: 20000

Not yet tested in other applications.

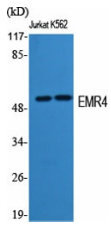
Images



Western Blot analysis of COLO205 cells using EMR4 Polyclonal Antibody



Western blot analysis of lysates from HUVEC cells, COS7 cells, HeLa cells, and COLO205 cells, using EMR4 Antibody. The lane on the right is blocked with the synthesized peptide.



Western Blot analysis of various cells using EMR4 Polyclonal Antibody

Storage

-20°C for one year

501 Changsheng S Rd, Nanhu Dist, Jiaxing, Zhejiang, China

Tel: 86 21 31007137 | E-mail: save@bt-laboratory.com | www.bt-laboratory.com