

Emx1 Polyclonal Antibody

Description

Product type	Primary Antibody
Code	BT-AP02945
Host	Rabbit
Isotype	IgG
Size	20ul, 50ul, 100ul
Immunogen	The antiserum was produced against synthesized peptide derived from human EMX1. AA range:181-230
Mol wt	28039
Species reactivity	Human, Mouse, Rat
Clonality	Polyclonal
Recommended application	WB, ELISA
Concentration	1 mg/ml
Full name	Emx1 Antibody
Synonyms	EMX1; Homeobox protein EMX1; Empty spiracles homolog 1; Empty spiracles-like protein 1

This product is for research use only, not for use in human, therapeutic or diagnostic procedure.

Background

Transcription factor, which in cooperation with EMX2, acts to generate the boundary between the roof and archipallium in the developing brain. May function in combinations with OTX1/2 to specify cell fates in the developing central nervous system.

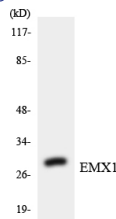
Recommended Dilution

WB: 1: 500 - 1: 2000

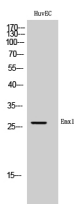
ELISA: 1: 40000

Not yet tested in other applications.

Images



Western blot analysis of the lysates from Jurkat cells using EMX1 antibody.



Western Blot analysis of HuvEC cells using Emx1 Polyclonal Antibody cells nucleus.

Storage

-20°C for one year